

Tuners and Shorts



DC-18 GHz

COAXIAL TUNERS AND SHORTS

- Broadband
- Wide Range of Impedance Matching
- Graduated Micrometer Drive on Tunable Short

SPECIFICATIONS

Fixed Shorts

FREQUENCY RANGE (GHz)	MODEL MALE	FEMALE	PHASE-SHORT TO DEGREES OPEN	CONNECTOR	WEIGHT Oz Gr (Max)	
DC-18		230-412	—	N	1.4	40
	230-416		—	N	1.0	28
		4230-412	—	SMA	0.5	15
	4230-416		—	SMA	0.5	15

Short/Open

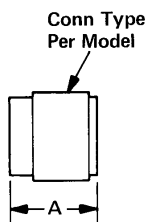
DC-18		231-412	Phase 180°	N	3.0	84
	231-416		Phase 180°	N	2.1	60
		4231-412	Phase 180°	SMA	.2	6
	4231-416		Phase 180°	SMA	.3	9

Tunable Short

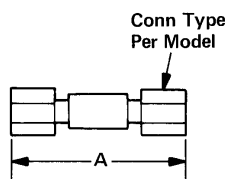
FREQUENCY RANGE (GHz)	MODEL MALE	FEMALE	TUNING DRIVE	CONNECTOR	WEIGHT Oz Gr (Max)	
3-10	901NM		Micrometer Drive	Type N	16	454

Tuners and Shorts

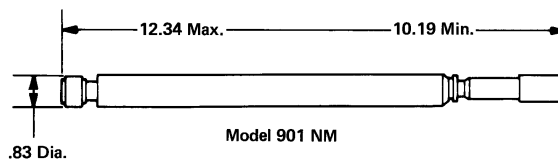
OUTLINE DRAWINGS



Model 230 Series	A Max
230-412	.83
230-416	.71
4230-412	.52
4230-416	.38



Model 231 Series	A Max
231-412	2.39
231-416	1.61
4231-412	1.17
4231-416	1.00



All dimensions are Max. unless otherwise specified.